

ASSURED PERFORMANCE

Fittings Catalogue



SERVING THE
AFTERMARKET
FOR OVER 40 YEARS



Your Turbo & Air Brake Specialists

CONTACT US:



(01) 4601 482



sales@assuredperformance.ie

www

assuredperformance.ie



Assured Performance Intl (Ireland) Ltd

Unit 12 -13

Ballymount Court Business Centre

Ballymount Rd, Walkinstown

Dublin 12

Rep. Of Ireland

D12 Y792

CONTENTS

NORGREN QUICK-FIT.....	1
RAUFOSS.....	3
PLASTIC QUICK-FIT.....	4
WIRA QUICK-FIT.....	5
COMPRESSION.....	6
VOSS 230 SYSTEM.....	9
PIPING & ASSOCIATED FITTINGS.....	11
ADAPTORS & BUILDING BLOCKS.....	13
TIPO SWIVEL ADAPTORS.....	15
AIRTANK ACCESSORIES.....	16
SUZIE ACCESSORIES.....	17

NORGREN QUICK-FIT FITTINGS

Norgren fittings are a quick fit push in system that can be released after fitting pipe

METRIC THREAD STUD STRAIGHT



APi Part Number	Thread (M)	Tube O.D. (mm)
T6564	M10	6
T6569	M10	8
T6576	M10	10
T6565	M12	6
T6570	M12	8
T6577	M12	10
T6584	M12	12
T6578	M14	10
T6585	M14	12
T6567	M16	6
T6572	M16	8
T6579	M16	10
T6586	M16	12
T6595	M16	16
T6568	M22	6
T6573	M22	8
T6580	M22	10
T6587	M22	12
T6596	M22	16

METRIC THREAD STUD ELBOW



APi Part Number	Thread (M)	Tube O.D. (mm)
T6601	M10	6
T6602	M12	6
T6604	M12	8
T6610	M12	10
T6603	M16	6
T6605	M16	8
T6613	M16	10
T6619	M16	12
T6625	M16	16
T6609	M22	6
T6606	M22	8
T6614	M22	10
T6620	M22	12
T6626	M22	16

IMPERIAL THREAD STUD ELBOW



APi Part Number	Thread (BSP)	Tube O.D. (mm)
T2661A	1/8	4
T2853N	1/8	6
T2856	1/8	8
T2860	1/8	10
T2849	1/4	4
T2666A	1/4	6
T2857	1/4	8
T2861	1/4	10
T2864	1/4	12
T2842C	3/8	12

IMPERIAL THREAD STUD STRAIGHT



APi Part Number	Thread (BSP)	Tube O.D. (mm)
T2831	1/8	4
T2834	1/8	6
T2836	1/8	8
T7946N	1/8	10
T2661	1/4	4
T2835	1/4	6
T2837	1/4	8
T2841	1/4	10
T2841A	1/4	12
T2838	3/8	8
T2842	3/8	10
T2842B	3/8	12
T2843	1/2	10
T2843A	1/2	12

NORGREN QUICK-FIT FITTINGS

Norgren fittings are a quick fit push in system that can be released after fitting pipe

EQUAL STRAIGHT CONNECTOR



API Part Number	Tube 1 O.D. (mm)	Tube 2 O.D. (mm)
T6501	4	4
T2802	5	5
T6502	6	6
T6504	8	8
T6505	9	9
T6506	10	10
T6507	11	11
T6508	12	12
T6511	15	15
T6513	16	16

EQUAL ELBOWS



API Part Number	Tube 1 O.D. (mm)	Tube 2 O.D. (mm)
T2471A	4	4
T6533	6	6
T2474A	8	8
T6537	10	10
T6539	12	12

EQUAL TEE CONNECTORS



API Part Number	Pipe 1 O.D. (mm)	Pipe 2 O.D. (mm)	Pipe 3 O.D. (mm)
T6517	6	6	6
T6519	8	8	8
T6521	10	10	10
T6523	12	12	12

METRIC STUD TEE



API Part Number	Male Thread (M)	Pipe 1 O.D. (mm)	Pipe 2 O.D. (mm)
T6637	M12	10	10
T6638	M16	10	10
T6644	M16	12	12
T6639	M22	10	10
T6645	M22	12	12

RAUFOSS FITTINGS

Api stock a full range of Raufoss Fittings

RaufossTM
COUPLINGS



PLASTIC QUICK-FIT FITTINGS

Plastic Fittings are a quick fit push in system that can be released after fitting pipe

EQUAL STRAIGHT CONNECTOR



API Part Number	Tube 1 O.D. (mm)	Tube 2 O.D. (mm)
T2411	4	4
T2412	5	5
T2413	6	6
T2414	8	8
T2415	10	10
T2416	12	12
T2417	15	15
T2418	18	18

UNEQUAL STRAIGHT CONNECTOR



API Part Number	Tube 1 O.D. (mm)	Tube 2 O.D. (mm)
T2431	6	4
T2433	8	6
T2434	10	6
T2435	10	8
T2432	12	10
T2403	12	8

EQUAL TEE CONNECTORS



API Part Number	Pipe 1 O.D. (mm)	Pipe 2 O.D. (mm)	Pipe 3 O.D. (mm)
T2451	4	4	4
T2452	5	5	5
T2453	6	6	6
T2454	8	8	8
T2455	10	10	10
T2456	12	12	12

EQUAL ELBOWS



API Part Number	Tube 1 O.D. (mm)	Tube 2 O.D. (mm)
T2471	4	4
T2472	5	6
T2473	6	6
T2474	8	8
T2475	10	10
T2476	12	12
T2477	15	15

"Y" CONNECTORS



API Part Number	Pipe 1 O.D. (mm)	Pipe 2 O.D. (mm)	Pipe 3 O.D. (mm)
T2816	4	4	4
T2817	6	6	6
T2818	8	8	8
T2819	10	10	10
T2820	12	12	12

STEM REDUCER



API Part Number	Stem O.D. (mm)	Female Tube O.D. (mm)
T2492	6	4
T2495	8	6
T2496	10	6
T2497	10	8
T2498	12	8
T2499	12	10

WIRA QUICK-FIT FITTINGS

Wira is a quick fit push in system that does not release after fitting pipe

METRIC THREAD STUD ELBOW



Api Part Number	Thread (M)	Tube O.D. (mm)
T4502A	M10	6
T4507A	M10	8
T7168B	M10	10
T4508A	M12	8
T7168	M12	10
T4527A	M12	12
T7157	M14	6
T7161	M14	8
T7162	M16	8
T7170	M16	10
T7175	M16	12
T7177	M16	15
T7163	M22	8
T7171	M22	10
T7176	M22	12

METRIC THREAD STUD STRAIGHT



Api Part Number	Thread (M)	Tube O.D. (mm)
T4502	M10	6
T4507	M10	8
T4512	M10	10
T4503	M12	6
T4508	M12	8
T4513	M12	10
T4527	M12	12
T4504	M14	6
T4509	M14	8
T4514	M14	10
T4505	M16	6
T4510	M16	8
T4519	M16	10
T4529	M16	12
T4532	M16	15
T4536	M16	16
T4506	M22	6
T4511	M22	8
T4520	M22	10
T4530	M22	12
T7077	M22	15
T7078	M22	16
T4539	M22	18

TEE CONNECTOR



Api Part Number	Tube 1 O.D.	Tube 2 O.D.	Tube 3 O.D.
T7275	6	6	6
T7276	8	8	8
T7278	10	10	10

STRAIGHT CONNECTOR



Api Part Number	Tube 1 O.D. (mm)	Tube 2 O.D. (mm)
T7110	6	6
T7112	8	8
T7114	10	10
T7116	12	12
T7117	15	15

COMPRESSION FITTINGS

Tube Supports, Thrust Rings & O rings are also required

EQUAL STRAIGHT CONNECTOR (TUBE SUPPORTS ALSO REQUIRED)



Api Part Number	Tube 1 O.D. (mm)	Tube 2 O.D. (mm)
T5233	3/16 (BSP)	3/16 (BSP)
T5211	1/8 (BSP)	1/8 (BSP)
T5244	1/4 (BSP)	1/4 (BSP)
T5266	3/8 (BSP)	3/8 (BSP)
T5277	1/2 (BSP)	1/2 (BSP)
T5311	4	4
T7733	6	6
T7734	8	8
T5309	9	9
T7735	10	10
T5301	11	11
T7736	12	14
T5377	14	12
T7737	15	15
T7738	16	16
T7739	18	18

METRIC THREAD STUD STRAIGHT (TUBE SUPPORTS, THRUST & O RINGS ALSO REQUIRED)



Api Part Number	Thread (M)	Tube O.D. (mm)
T7732	M10	6
T7729G	M10	8
T7712G	M10	10
T7711	M12	6
T7713	M12	8
T7717	M12	10
T7721	M12	12
T7714G	M14	8
T7718	M14	10
T7886G	M14	12
T7707G	M16	6
T7715	M16	8
T7719	M16	10
T7722	M16	12
T7726	M16	15
T7706	M18	12
T7716	M22	8
T7720	M22	10
T7723	M22	12
T7727	M22	15
T7731	M22	16
T7728	M22	18

EQUAL TEE CONNECTORS (TUBE SUPPORTS ALSO REQUIRED)



Api Part Number	Pipe 1 O.D. (mm)	Pipe 2 O.D. (mm)	Pipe 3 O.D. (mm)
T5505	5	5	5
T7810	6	6	6
T7811	8	8	8
T5509	9	9	9
T7812	10	10	10
T7813	12	12	12
T7814G	15	15	15
T7815G	16	16	16
T7816G	18	18	18

EQUAL ELBOW CONNECTOR (TUBE SUPPORTS ALSO REQUIRED)



Api Part Number	Tube 1 O.D. (mm)	Tube 2 O.D. (mm)
T7800	6	6
T7801	8	8
T5709	9	9
T7802	10	10
T7803	12	12
T7804	15	15
T7806	18	18



COMPRESSION FITTINGS

Tube Supports, Thrust Rings & O rings are also required

BULKHEAD STUD ELBOW (TUBE SUPPORTS, THRUST & O RINGS ALSO REQUIRED)



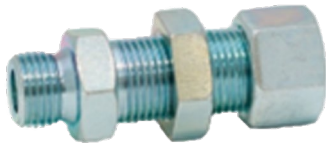
API Part Number	Thread Size (M)	Tube Size O.D. (mm)
T7780	M12	8
T7781	M12	10
T7782	M14	10
T7783	M16	10
T7789	M16	12
T7784	M22	10
T7785	M22	12
T7786	M22	15
T7788	M22	16
T7787	M22	18

TUBE SUPPORTS



API Part Number	Size (mm) (I.D)	Number Per Packet
T3151	4	10
T3152	6	10
T3153	7	10
T3154	8	10
T3155	9	10
T3156	10	10
T3157	11	10
T3158	12	6
T3159	14	6
T3160	7.5	10

BULKHEAD STUD STRAIGHT (TUBE SUPPORTS, THRUST & O RINGS ALSO REQUIRED)



API Part Number	Thread Size (M)	Tube Size O.D. (mm)
T7744G	M22	10
T7745	M22	12
T7746G	M22	15

THRUST RINGS



API Part Number	To Suit Thread (M)
T7640	M10
T7641	M12
T7642	M14
T7643	M16
T7644	M18
T7645	M22

BULKHEAD EQUAL STRAIGHT CONNECTOR (TUBE SUPPORTS ALSO REQUIRED)



API Part Number	Tube 1 O.D. (mm)	Tube 2 O.D. (mm)
T7750G	10	10
T7751G	12	12

RUBBER O RINGS



API Part Number	To Suit Thread (M)
T7646	M10
T7647	M12
T7648	M14
T7649	M16
T7650	M18
T7651	M22

COMPRESSION FITTINGS

Tube Supports, Thrust Rings & O rings are also required

BRANCH STEM TEE (TUBE SUPPORTS REQUIRED)



API Part Number	Pipe 1	Pipe 2	Pipe 3
T7909	6	6	6
T7891	8	8	8
T7853G	10	10	10

SIDE STEM TEE (TUBE SUPPORTS, TUBE NUT & CUTTING RING REQUIRED)



API Part Number	Pipe 1	Pipe 2	Pipe 3
T7907G	6	6	6
T7890G	8	8	8
T7854G	10	10	10
T7884G	12	12	12

STEM ELBOW (TUBE SUPPORTS, TUBE NUT & CUTTING RING ALSO REQUIRED)



API Part Number	Pipe 1	Pipe 2
T7917G	6	6
T7883G	8	8
T7799G	10	10
T7893G	12	12

VOSS 230 SYSTEM

There are two types of Models in this system, "BM" (Big Model, M22 Nut) & LM (Little Model, M16 Nut). Which ever size you use, you will always need a male nut and circlip

LM MALE NUT



API Part Number	Thread
T4702	M16

BM MALE NUT



API Part Number	Thread
T4703	M22

LM CIRCLIP



API Part Number	To Suit Nut Size
T4700	M16

BM CIRCLIP



API Part Number	To Suit Nut Size
T4701	M22

LM STRAIGHT STUD (LM MALE NUT AND CIRCLIP ALSO REQUIRED)



API Part Number	To Suit Pipe Size
T4740	4-6mm
T4741	6-8mm

BM STRAIGHT STUD (BM MALE NUT AND CIRCLIP ALSO REQUIRED)



API Part Number	To Suit Pipe Size
T4742	4-6mm
T4743	6-8mm
T4744	9-12mm
T4745	12-16mm

LM ELBOW STUD (LM MALE NUT AND CIRCLIP ALSO REQUIRED)



API Part Number	To Suit Pipe Size
T4746	4-6mm
T4747	6-8mm

BM ELBOW STUD (BM MALE NUT AND CIRCLIP ALSO REQUIRED)



API Part Number	To Suit Pipe Size
T4748	4-6mm
T4749	6-8mm
T4750	9-12mm
T4751	12-16mm

VOSS 230 SYSTEM

There are two types of Models in this system, "BM" (Big Model, M22 Nut) & LM (Little Model, M16 Nut). Which ever size you use, you will always need a male nut and circlip

LM TEE STUD (LM MALE NUT AND CIRCLIP ALSO REQUIRED)



API Part Number	To Suit Pipe Size
T4776A	6-8mm

BM TEE STUD (BM MALE NUT AND CIRCLIP ALSO REQUIRED)



API Part Number	To Suit Pipe Size
T4776	9-12mm

PIPING AND ASSOCIATED FITTINGS

CUTTINGS RINGS (EACH)



API Part Number	Internal Dia. (mm)
T7584	4
T7690	6
T7691	8
T7692	10
T7693	12
T7694A	14
T7694	15
T7695	16
T7696	18
T7697	22

TUBE SUPPORTS (PACKET)



API Part Number	Size (mm)	Number Per Packet
T3151	4	10
T3152	6	10
T3153	7	10
T3154	8	10
T3155	9	10
T3156	10	10
T3157	11	10
T3158	12	6
T3159	14	6
T3160	7.5	10

BARREL OLIVES (PACKET)



API Part Number	Size (mm)	Number Per Packet
T3032	6	20
T3033	8	15
T3034	10	12
T3035	12	8
T3039	16	5

STEPPED OLIVES (PACKET)



API Part Number	Size (mm)	Number Per Packet
T3021	4	25
T3022	6	20
T3023	8	15
T3099	9	12
T3024	10	10
T3025	12	8
T3028	15	8
T3029	16	5

TUBE NUTS



API Part Number	Tube O.D (mm)
T7680G	6
T7681G	8
T7682G	10
T7683G	12

PIPING AND ASSOCIATED FITTINGS

NYLON BLACK (25M ROLL)



API Part Number	Outside Dia. (mm)	Inside Dia. (mm)	Wall Thickness (mm)
T1311R	4	2.5	0.75
T1305R	5	3	1
T1321R	6	4	1
T1331R	8	6	1
T1309R	9	6	1.5
T1341HR	10	7	1.5
T1310R	11	8	1.5
T1351R	12	9	1.5
T1371R	14	10	2
T1381R	15	11	2
T1401R	16	12	2
T1391R	18	14	2

KUNIFER NICKLE



API Part Number	Outside Dia. (mm)	Roll Length (metre)
T1500	3/16"	7.5
T1501	1/4"	7.5
T1501M	6mm	7.5
T1502	5/16"	7.5
T1503	3/8"	7.5
T1503M	10mm	7.5
T1504	1/2"	7.5
T1504M	12mm	7.5

ADAPTORS & BUILDING BLOCKS

MALE/MALE ADAPTORS (THRUST & O RINGS ALSO REQUIRED)



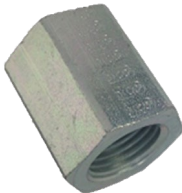
API Part Number	Thread 1	Thread 2
T0511	1/8 (BSP)	1/8 (BSP)
T0544	1/4 (BSP)	1/4 (BSP)
T0577	1/2 (BSP)	1/2 (BSP)
T0599	3/4 (BSP)	3/4 (BSP)
T0546	3/8 (BSP)	1/4 (BSP)
T0566	3/8 (BSP)	3/8 (BSP)
T7860G	M12	M12
T7874	M16	1/8 (BSP)
T7877	M16	1/4 (BSP)
T7986	M16	M10
T7862G	M16	M12
T7868G	M16	M16
T2021	M18	1/2 (BSP)
T7951B	M18	M14
T7951	M18	M16
T7870	M18	M18
T7879	M22	1/2 (BSP)
T7869G	M22	M16
T7871	M22	M18
T7872	M22	M22

MALE/FEMALE ADAPTORS (THRUST & O RINGS ALSO REQUIRED)



API Part Number	Male Thread	Female Thread
T6214	1/4 (BSP)	1/8 (BSP)
T7599	1/4 (BSP)	3/8 (BSP)
T7611	1/4 (BSP)	M16
T7612	1/4 (BSP)	M22
T6246	3/8 (BSP)	1/4 (BSP)
T7619	3/8 (BSP)	M22
T7615	3/8 (BSP)	M16
T6247	1/2 (BSP)	1/4 (BSP)
T6267	1/2 (BSP)	3/8 (BSP)
T7598	1/2 (BSP)	M18
T7607	1/2 (BSP)	M16
T7613	1/2 (BSP)	M22
T7594	M12	M16
T7704	M12	M22
T7595	M14	M16
T7606	M16	1/4 (BSP)
T7616	M16	3/8 (BSP)
T7618	M16	1/2 (BSP)
T7700	M16	M10
T7701	M16	M12
T7617	M16	M22
T7597	M18	M22
T7601	M22	1/8 (BSP)
T7602	M22	1/4 (BSP)
T7603	M22	3/8 (BSP)
T7614	M22	1/2 (BSP)
T7605	M22	M12
T7605B	M22	M14
T7604	M22	M16
T7585	M26	M22

FEMALE/FEMALE ADAPTORS



API Part Number	Thread 1	Thread 2
T0411	1/8 (BSP)	1/8 (BSP)
T0444	1/4 (BSP)	1/4 (BSP)
T0466	3/8 (BSP)	3/8 (BSP)
T0477	1/2 (BSP)	1/2 (BSP)
T0499	3/4 (BSP)	3/4 (BSP)
T7587	M12	M12
T7586	M14	M14
T7701G	M16	M12
T7610	M16	M16
T7703	M22	3/8 (BSP)
T7608	M22	1/2 (BSP)
T7702	M22	M16
T7591	M22	M18
T7609G	M22	M22

FEMALE/FEMALE THREAD ELBOWS



API Part Number	Thread 1	Thread 2
T4581	M12	M12
T4582	M16	M16
T4583	M22	M22

ADAPTORS & BUILDING BLOCKS

BLANKING PLUGS (THRUST & O RINGS ALSO REQUIRED)



API Part Number	Thread Size
T0801	1/8 (BSP)
T0804	1/4 (BSP)
T0806	3/8 (BSP)
T0807	1/2 (BSP)
T7620	M10
T7621	M12
T7624	M14
T7622	M16
T7625	M18
T7623	M22

FEMALE THREAD TEE



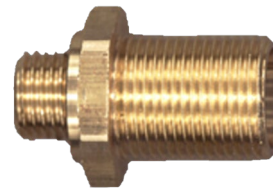
API Part Number	Thread 1	Thread 2	Thread 3
T0384	1/4 (BSP)	1/4 (BSP)	1/4 (BSP)
T0386	3/8 (BSP)	3/8 (BSP)	3/8 (BSP)
T0387	1/2 (BSP)	1/2 (BSP)	1/2 (BSP)
T4593	M12	M12	M12
T7889G	M16	M16	M16

MALE/FEMALE THREAD ELBOWS



API Part Number	Male Thread	Female Thread
T0744	1/4 (BSP)	1/4 (BSP)
T0766	3/8 (BSP)	3/8 (BSP)
T0777	1/2 (BSP)	1/2 (BSP)
T4584	M12	M12
T4587	M14	M14
T4585	M16	M16
T4584A	M22	M12
T4586	M22	M16
T4670	M22	M22

MALE/MALE BULKHEAD CONNECTOR WITH FEMALE INNER THREAD



API Part Number	Thread 1	Thread 2	Inner Thread
T8724B	M22	M22	M16

FEMALE 4 WAY CROSS



API Part Number	ALL PORTS
T4637	M16

MALE/MALE BULKHEAD ADAPTORS (THRUST & O RINGS ALSO REQUIRED)



API Part Number	Thread A	Thread B
T7896	M16	M16
T7760B	M18	M16
T7741G	M22	M16
T7760A	M22	M18
T7742G	M22	M22

VOSS ADAPTOR



API Part Number	Male Thread	Female Thread
4711	M16	M22 VOSS

TIPO SWIVEL ADAPTORS

Select the size tipo stud along with the fitting required

SWIVEL ELBOW (TIPO STUD ALSO REQUIRED)



API Part Number	Female Thread
T4580	M16

SWIVEL TEE (TIPO STUD ALSO REQUIRED)



API Part Number	Female Thread
T4590	M16

SWIVEL "F" FITTING (TIPO STUD ALSO REQUIRED)



API Part Number	Female Thread
T4634	M16

SWIVEL 45 DEGREE ADAPTOR (TIPO STUD ALSO REQUIRED)



API Part Number	Female Thread
T4497	M16

TIPO STUD



API Part Number	Male Thread
T4617	M12
T4618	M16
T4619	M22

AIRTANK ACCESSORIES

MALE TEST POINTS



API Part Number	Male Thread
T7835	M16
T7836	M22

TEST POINT ADAPTORS



API Part Number	Thread (M)	Pipe I.D.
T8000/4	M16	1/4"
T8000/6	M16	3/8"

FEMALE TEST POINTS



API Part Number	Male Thread
T7831	M16

SHUT OFF TAP



API Part Number	Thread 1	Thread 2
T0132	1/2 (BSP)	1/2 (BSP)

DRAIN TAP WITH PULL RING



API Part Number	Male Thread
T8628	M22

DRAIN TAP WITH CABLE



API Part Number	Male Thread
T7629	M22

MALE HOSETAILS



API Part Number	Thread (M)	Pipe I.D.
T7894	M16	1/4"
T7772	M16	3/8"
T7774	M16	13mm

SUZIE ACCESSORIES

MALE EMERGENCY LINE COUPLING



APi Part Number	Female Thread
T0153R	M16
T0151R	M22

FEMALE EMERGENCY LINE COUPLING



APi Part Number	Female Thread
T0161R	M16
T0156R	M22

MALE EMERGENCY LINE COUPLING



APi Part Number	Female Thread
T0160R	M16
T0155R	M22

FEMALE EMERGENCY LINE COUPLING



APi Part Number	Female Thread
T0154R	M16
T0152R	M22



Your Turbo & Air Brake Specialists

**These are the common fittings.
Should you require anything not shown in this catalogue.
Please contact us:**



(01) 4601 482



sales@assuredperformance.ie

www

assuredperformance.ie



**Assured Performance Intl (Ireland) Ltd
Unit 12 -13
Ballymount Court Business Centre
Ballymount Rd, Walkinstown
Dublin 12
Rep. Of Ireland
D12 Y792**

